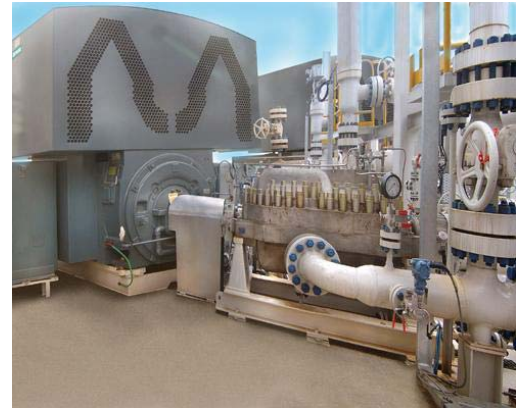




Soft Starters for the Oil & Gas Industry

Driving seawater injection pumps

Motor ratings: 11000V, 118A
FPSO - Santos, Australia



Siemens Motor 11KV, 118A,
2600HP 3577 RPM
Driving a water injection pump

Extruding crude oil from under the ocean floor requires the pumping of vast amounts of seawater into the cavity under the ocean floor in order to create pressure to force the crude out and up toward the ocean's surface.

Thousands of horsepower are used for this type of application. The seawater injection pump is powered by a Siemens 11kV, 118A, 2600HP motor. Solcon was called upon for their expertise in producing highly reliable soft starters that would provide smooth, stepless acceleration while eliminating high inrush currents and damaging torque surges during start up.

With the added benefit of the built in motor protection package, long term operation and reliability is possible even in the most demanding applications like this one.

Santos Modec Venture 11 in the
Mutineer Exeeteer field



Solcon's HRVS-DN, 11KV
With an MPR-6/DGF



Soft-starting AC motors is what we do best